

# ALIDA 2014 Art Contest Entrants For Grades 3 to 7





**Abbey, 9**

**These are my feelings about dyslexia. It is like four seasons of dyslexia. The question marks mean sometimes I really don't get things. The smiling faces mean that sometimes dyslexia is not so bad to have. The girl with the sad face means that I do not like tutoring when everybody else gets to play outside. Then, the one with the present means I can think outside the box when others can't.**





**Adam, 13**

### **Dogs and Dyslexia**

**I drew a picture of a dog because my dyslexia is like a dog. A dog needs to be trained and worked with. Dyslexic student must go over and over a skill before they learn it. Dogs need to be redirected often. Dyslexic students usually need help staying on topic. Dogs and dyslexic students both need positive feedback. Dogs and dyslexic students are alike in many ways.**





**Ange, 13**

**My artwork has a tree with abstract letters that are supposed to look like glass. They are the leaves of tree and represent how it is growing with knowledge, and the letters get bigger and clearer.**



Jeanine, 9

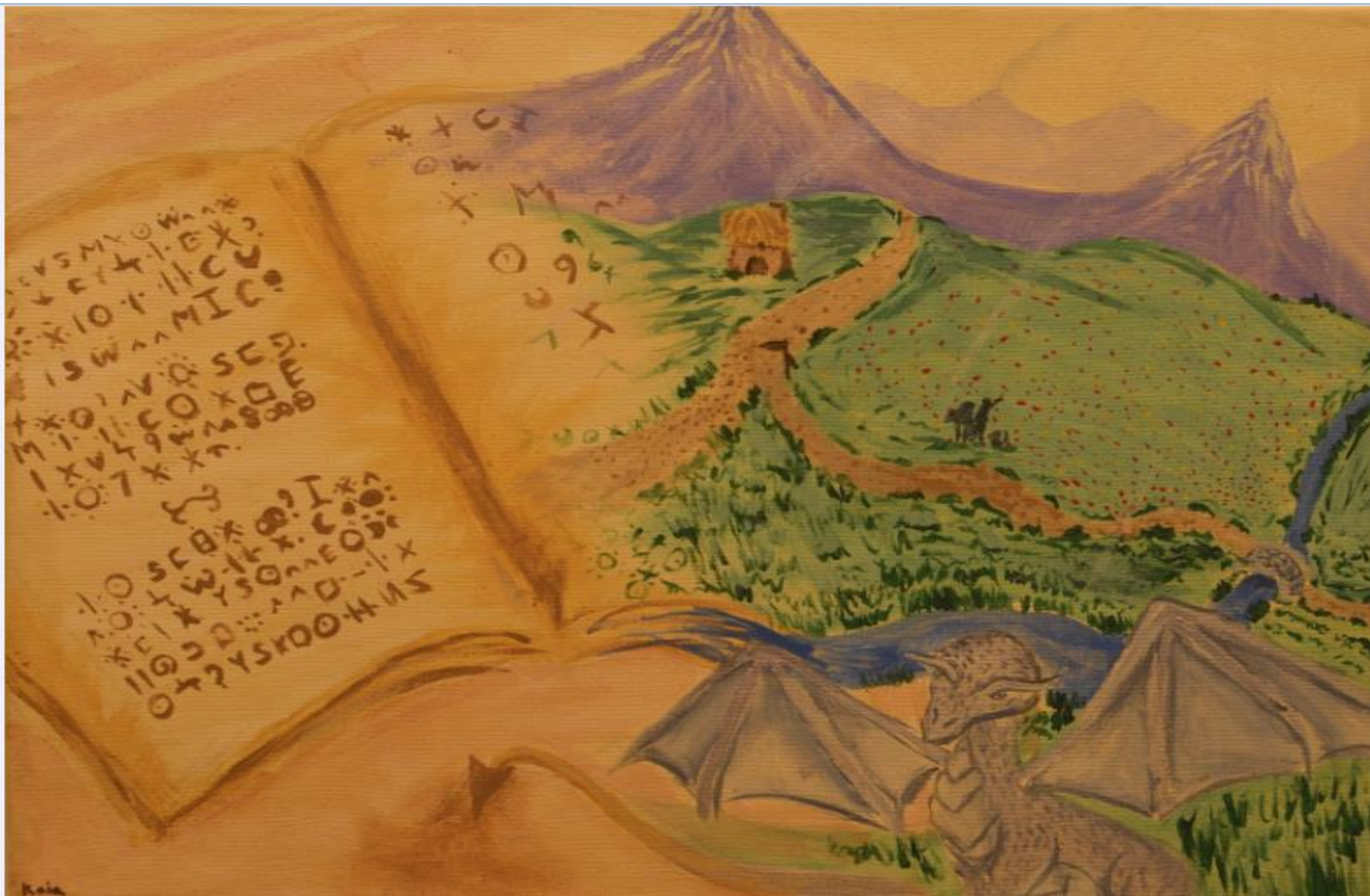
**Dyslexia is a open door that is closed for a while then it's always opened for creativity and ideas!**





Julie Coker  
9/22/14

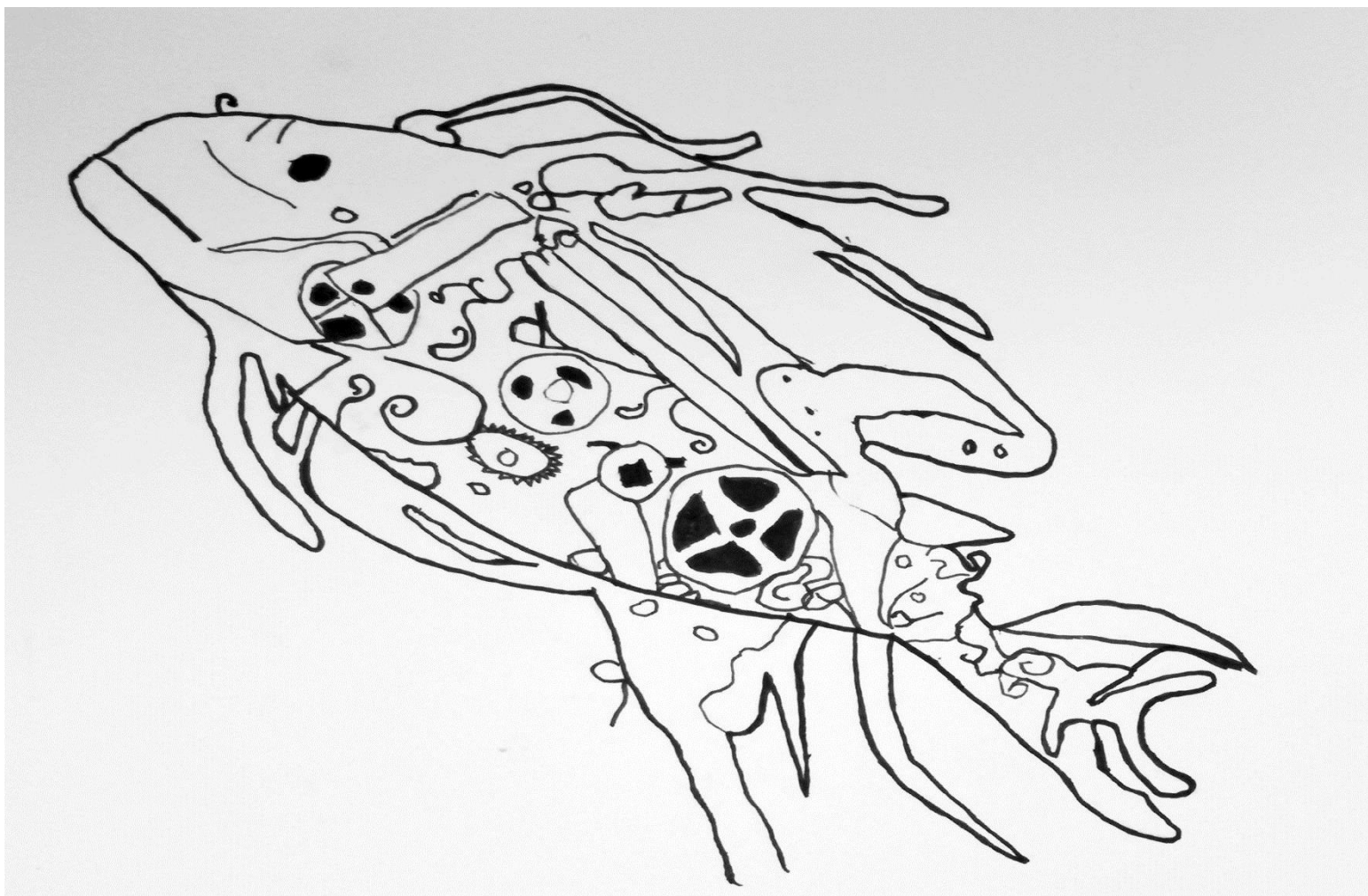
**Julie, 9**



**Kaia, 12**

**This is a piece about how because of my dyslexia when I read a book, I see pictures instead of words, and how I put myself in the story. The symbols on the book represent how I perceive letters on a page.**





**Luke, 12**

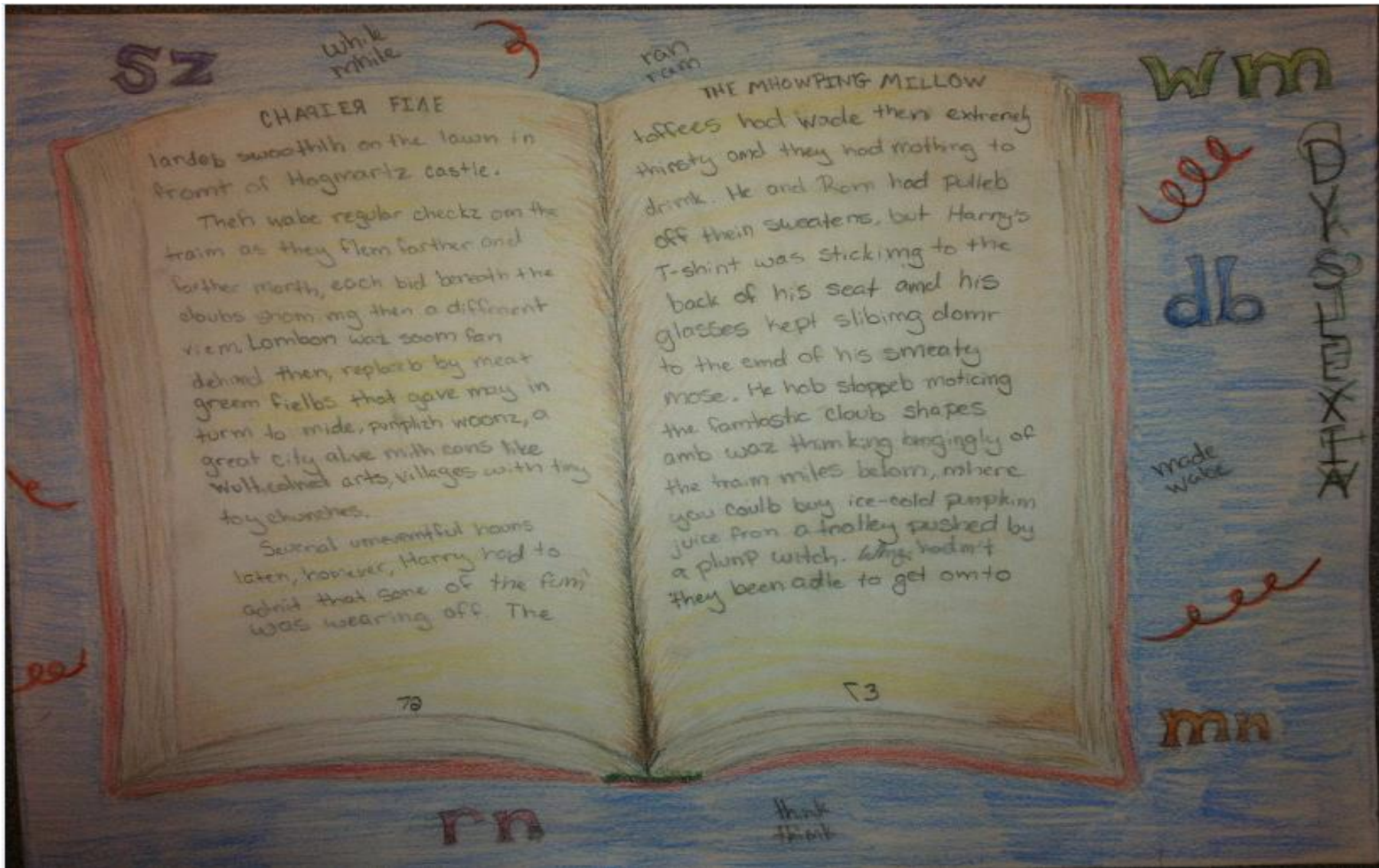
**The fish represents my dyslexia because it is so complex. The gears represents my brain dyslexic brain and how it works. Sometimes the gears have to be adjusted to properly like your brain.**





**Matthew, 12**

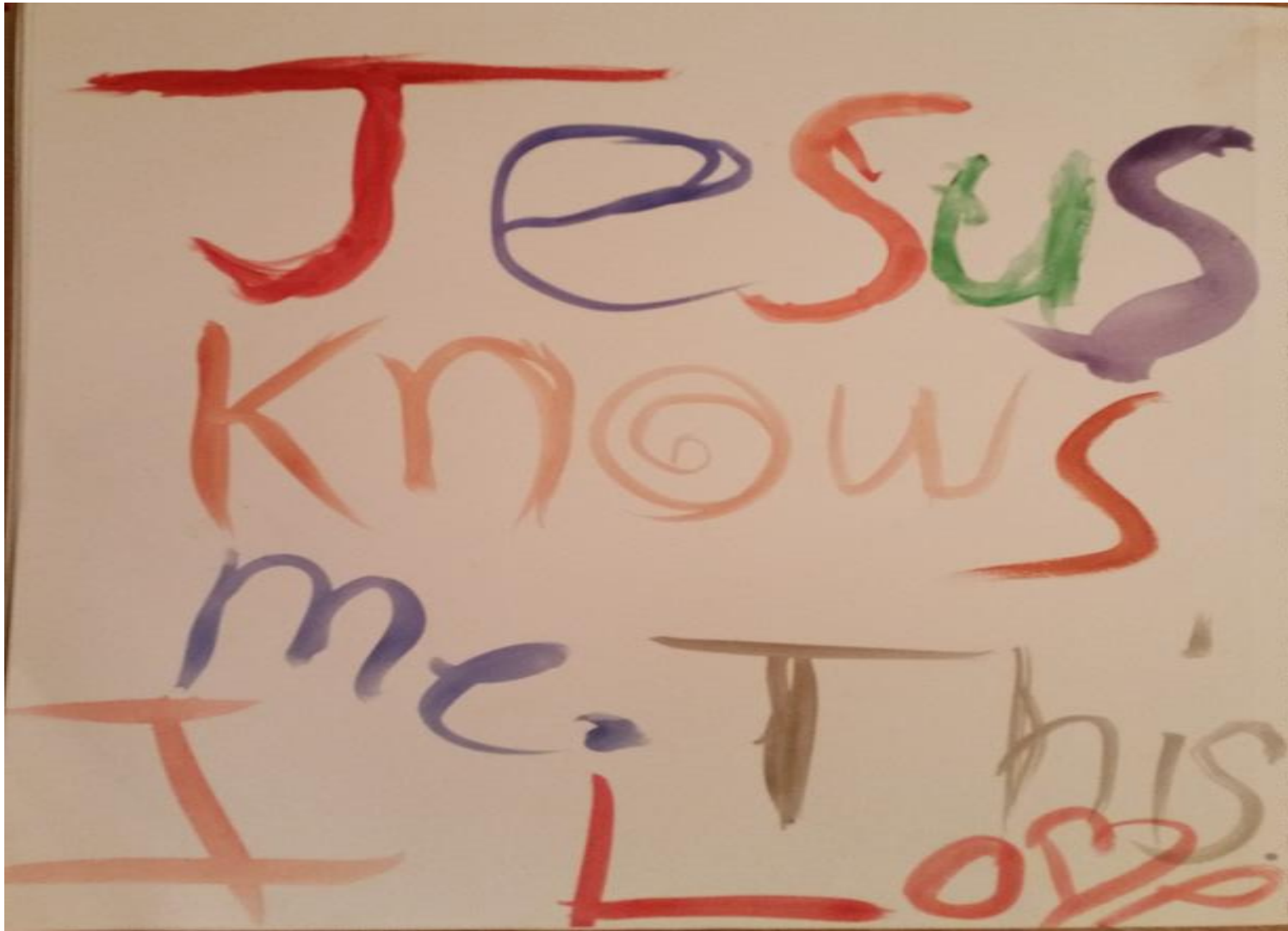
**Sometimes when I read the words on a page the letters jump all over. The photograph show how it feels when I read. All the words are different sizes and look out of place. When I try to read a large novel it is a challenge for me, but I try hard.**



Meredith, 12

People with dyslexia often have a hard time reading. They often confuse letters with others such as “b” and “d” and “m” with “w”. It is often hard for them to do things because of this disadvantage.





**Tiffani, 8**

**I have Dyslexia and things are not always easy for me. I love to sing, but I even get that confused sometimes. I get frustrated with myself, but I try to remember that God made me this way for a reason.**



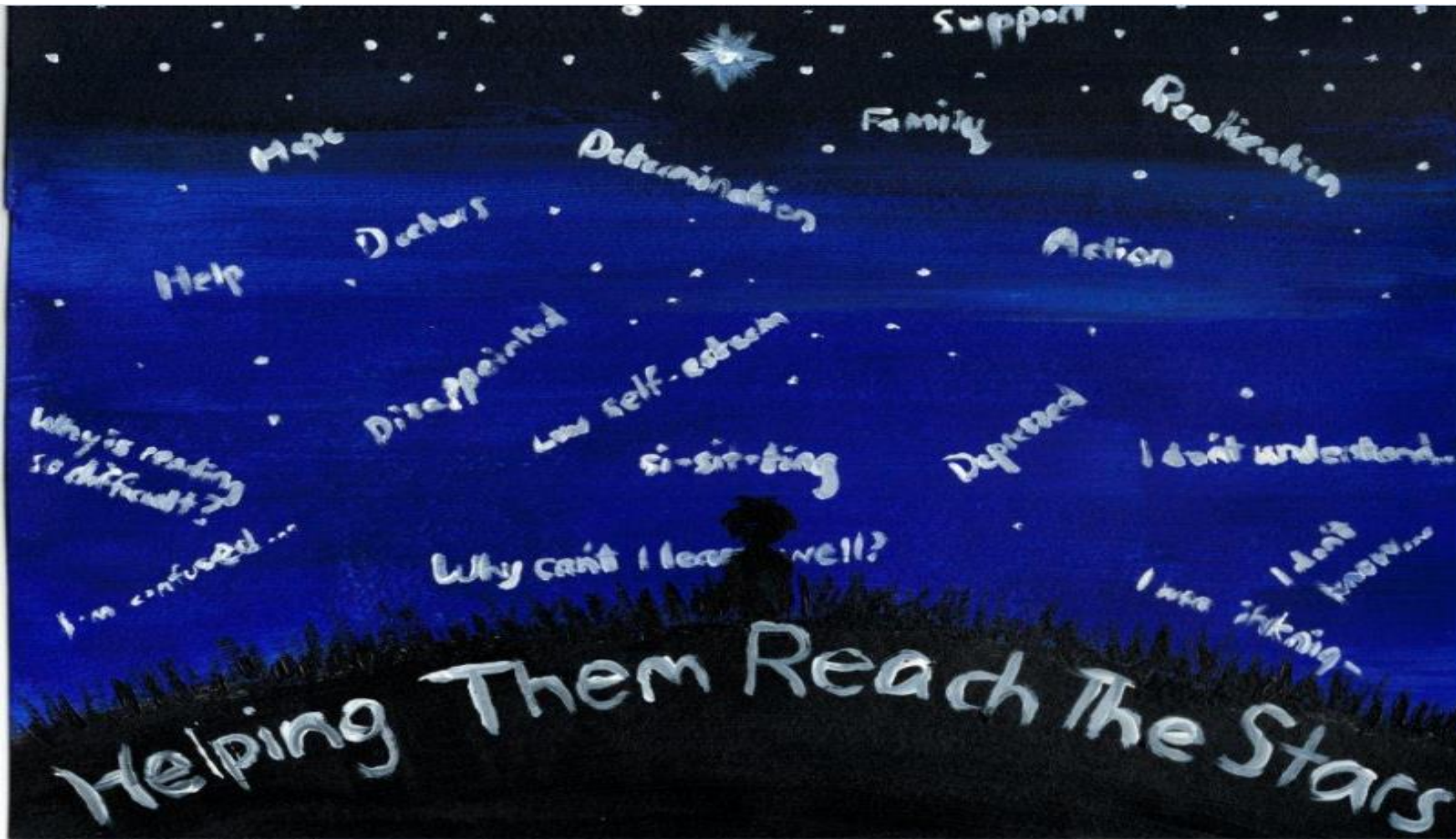




**Travis, 12**

**Dyslexia makes me feel like a small fish in a big ocean sometimes.**





Victoria, 12

My project shows a child sitting in the grass under the stars. The words in the lower part of the sky express disappointment and trouble with dyslexia. But as you go up, words like hope and determination come up to show achievement and persistent work. The phrase “Help Them Reach The Stars” means that we, parents, friends and doctors, can help children or adults with dyslexia overcome their problems and reach the stars.